



(12) **United States Design Patent**
Ellis

(10) **Patent No.:** **US D988,660 S**
(45) **Date of Patent:** **** Jun. 13, 2023**

- (54) **LATERAL SIDE EXTENSION FOR THE MIDFOOT OF A SHOE SOLE**
- (71) Applicant: **Frampton E. Ellis**, Jasper, FL (US)
- (72) Inventor: **Frampton E. Ellis**, Jasper, FL (US)
- (**) Term: **15 Years**
- (21) Appl. No.: **29/788,780**
- (22) Filed: **Jul. 27, 2021**
- (51) **LOC (14) Cl.** **02-04**
- (52) **U.S. Cl.**
USPC **D2/947**
- (58) **Field of Classification Search**
USPC D2/902, 906, 908, 916, 918, 925,
D2/946-962, 977; 36/3 B, 22 R, 24.5,
36/25 R, 28, 32 R, 34 R, 59 C, 67 A, 103
CPC A43B 13/00; A43B 13/02; A43B 13/023;
A43B 13/026; A43B 13/04; A43B 13/08;
A43B 13/10; A43B 13/12; A43B 13/14;
A43B 13/141; A43B 13/143; A43B
13/16; A43B 13/18; A43B 13/181; A43B
13/187; A43B 13/189; A43B 13/20; A43B
13/22; A43B 13/223; A43B 13/24; A43B
13/28; A43B 13/30; A43B 13/32; A43B
13/34; A43B 13/36
See application file for complete search history.

- (56) **References Cited**
U.S. PATENT DOCUMENTS
3,355,535 A * 11/1967 Hain A43D 8/06
428/317.1
D253,138 S 10/1979 Foldes
D294,706 S 2/1988 Birittella
4,967,750 A 11/1990 Cherniak
D326,763 S * 6/1992 Holbrook D2/907
D329,536 S 9/1992 Lucas
D330,800 S 11/1992 Lucas
D332,516 S 1/1993 Middleton
(Continued)

OTHER PUBLICATIONS

Ellis, Frampton E., "Athletic Sandal and Athletic Sandal Sole", Design U.S. Appl. No. 29/690,842, filed May 10, 2019 (7 pages).
Primary Examiner — T Chase Nelson
(74) *Attorney, Agent, or Firm* — Mendelsohn Dunleavy, P.C.

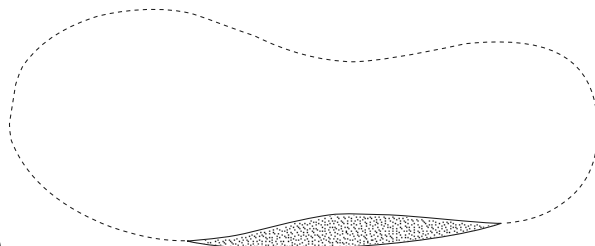
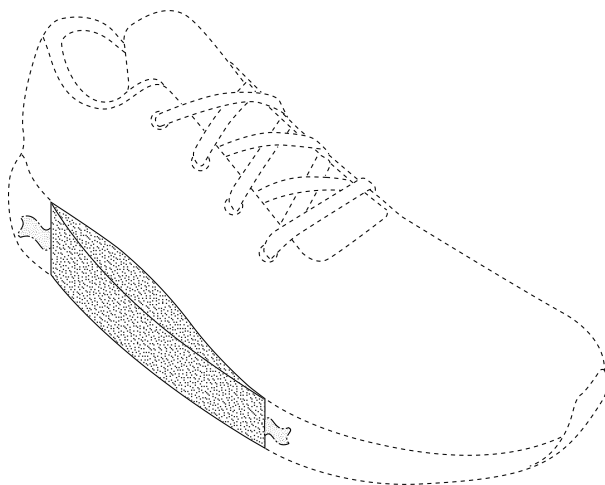
(57) **CLAIM**

The ornamental design for a lateral side extension for the midfoot of a shoe sole, as shown and described.

DESCRIPTION

FIG. 1 is a perspective view of a shoe including the lateral side extension for the midfoot of a shoe sole (hereinafter "lateral side extension"); FIG. 2 is an anterior (front) view of the shoe of FIG. 1; FIG. 3 is a posterior (rear) view of the shoe of FIG. 1; FIG. 4 is a lateral view of the shoe of FIG. 1; FIG. 5 is a medial view of the shoe of FIG. 1; FIG. 6 is a top view of the shoe of FIG. 1; and, FIG. 7 is a bottom view of the shoe of FIG. 1. In FIGS. 1-7 the consistent length broken lines depict unclaimed environmental structure. The broken lines and the structures they depict form no part of the claimed design. In FIGS. 1-7, the dash-dot broken lines on either side of the lateral side extension show the boundaries of these portions of the claimed design, and form no part thereof. In FIGS. 1-7, the two types of shading indicate a contrast between the portions of the lateral side extension upon which they are found. The embodiments of the shoe including the lateral side extension for midfoot of shoe sole shown in FIGS. 1-7 is for a right foot. The embodiments of the shoe including the lateral side extension for midfoot of shoe sole for a left foot are mirror images of the embodiments shown in FIGS. 1-7 about a sagittal plane of a human body.

1 Claim, 7 Drawing Sheets



(56)

References Cited

U.S. PATENT DOCUMENTS

D332,517 S	1/1993	Middleton		D627,550 S *	11/2010	Zhang	D2/961
D335,209 S	5/1993	Avar		D629,187 S *	12/2010	Zhang	D2/961
D337,651 S *	7/1993	Kilbey A43D 8/06 D2/951	D650,566 S *	12/2011	Yamashita	D2/951
D346,271 S	4/1994	McDonald		8,291,614 B2	10/2012	Ellis		
D353,038 S	12/1994	Morris et al.		D683,118 S	5/2013	Pauk		
D375,615 S	11/1996	McDonald		8,505,219 B2	8/2013	Avar et al.		
D410,323 S	6/1999	Birkenstock		D693,548 S	11/2013	Yudelowitz		
5,909,948 A	6/1999	Ellis, III		D699,424 S	2/2014	Hamm		
D411,759 S *	7/1999	Byrd D2/961	D731,766 S	6/2015	Ellis		
D416,128 S	11/1999	Kelchak		D773,796 S	12/2016	Hobgood		
D420,785 S	2/2000	Perez		D783,970 S	4/2017	Kanata		
6,115,941 A	9/2000	Ellis, III		D787,167 S	5/2017	Ellis		
6,115,945 A	9/2000	Ellis, III		D795,552 S *	8/2017	Clough	D2/961
6,295,744 B1	10/2001	Ellis, III		D796,173 S	9/2017	Winfield		
D449,918 S	11/2001	Boncutter		D799,180 S *	10/2017	Sokol	D2/947
6,487,795 B1	12/2002	Ellis, III		D815,812 S	4/2018	Matsuo		
D474,592 S	5/2003	Fogg		D816,962 S	5/2018	Ellis		
6,584,706 B1	7/2003	Ellis, III		D817,610 S *	5/2018	Shyllon	D2/947
6,609,312 B1	8/2003	Ellis, III		D826,527 S	8/2018	Petrie		
6,629,376 B1	10/2003	Ellis, III		D837,497 S	1/2019	Ellis		
D483,929 S	12/2003	Tzenos		D838,088 S	1/2019	Ellis		
6,675,498 B1	1/2004	Ellis, III		D838,090 S	1/2019	Ellis		
D485,972 S	2/2004	Magro		D840,645 S	2/2019	Ellis		
6,789,331 B1	9/2004	Ellis, III		D841,953 S	3/2019	Ellis		
D498,902 S	11/2004	Adams		D844,304 S	4/2019	Ellis		
6,810,606 B1	11/2004	Ellis, III		D844,945 S	4/2019	Ellis		
D504,213 S	4/2005	Matis		D845,592 S	4/2019	Ellis		
D512,557 S *	12/2005	Lane, III D2/906	D863,739 S	10/2019	Ellis		
D513,838 S	1/2006	Birkenstock		D865,348 S *	11/2019	Dieudonné	D2/972
D517,291 S *	3/2006	Vasyli A43B 13/026 D2/961	D869,825 S	12/2019	Ellis		
D517,788 S	3/2006	Seamans		D873,542 S	1/2020	Ellis		
7,174,658 B2	2/2007	Ellis, III		D880,833 S *	4/2020	Carbonere	D2/972
D545,031 S *	6/2007	Tse F04B 43/113 D2/902	D882,221 S *	4/2020	Cooper	D2/947
7,243,443 B2	7/2007	Swigart		D901,854 S *	11/2020	Avar	D2/947
7,334,350 B2	2/2008	Ellis, III		D921,337 S	6/2021	Ellis		
7,334,356 B2	2/2008	Ellis, III		2004/0216330 A1	11/2004	Swigart		
D563,648 S	3/2008	Belley et al.		2005/0217141 A1	10/2005	Cobian		
D564,748 S	3/2008	Belley et al.		2009/0064538 A1 *	3/2009	Roether A43B 13/026 36/25 R	
D593,286 S	6/2009	Del Biondi et al.		2012/0174434 A1	7/2012	Ellis		
D593,287 S	6/2009	Del Biondi et al.		2012/0210603 A1	8/2012	Ellis		
7,562,468 B2	7/2009	Ellis, III		2012/0226353 A1	9/2012	Ellis		
D608,993 S	2/2010	McClaskie		2012/0324763 A1	12/2012	Ellis		
D611,237 S *	3/2010	Torrance D2/961	2013/0146407 A1	6/2013	Ellis		
D612,589 S	3/2010	Kovacs		2013/0152282 A1	6/2013	Ellis		
7,793,430 B2	9/2010	Ellis		2013/0153346 A1	6/2013	Ellis		
				2013/0157003 A1	6/2013	Ellis		
				2013/0160322 A1	6/2013	Ellis		
				2014/0310992 A1	10/2014	Shalom et al.		
				2014/0345167 A1	11/2014	Al-Ani		
				2021/0368938 A1 *	12/2021	Browne F04B 43/113	

* cited by examiner

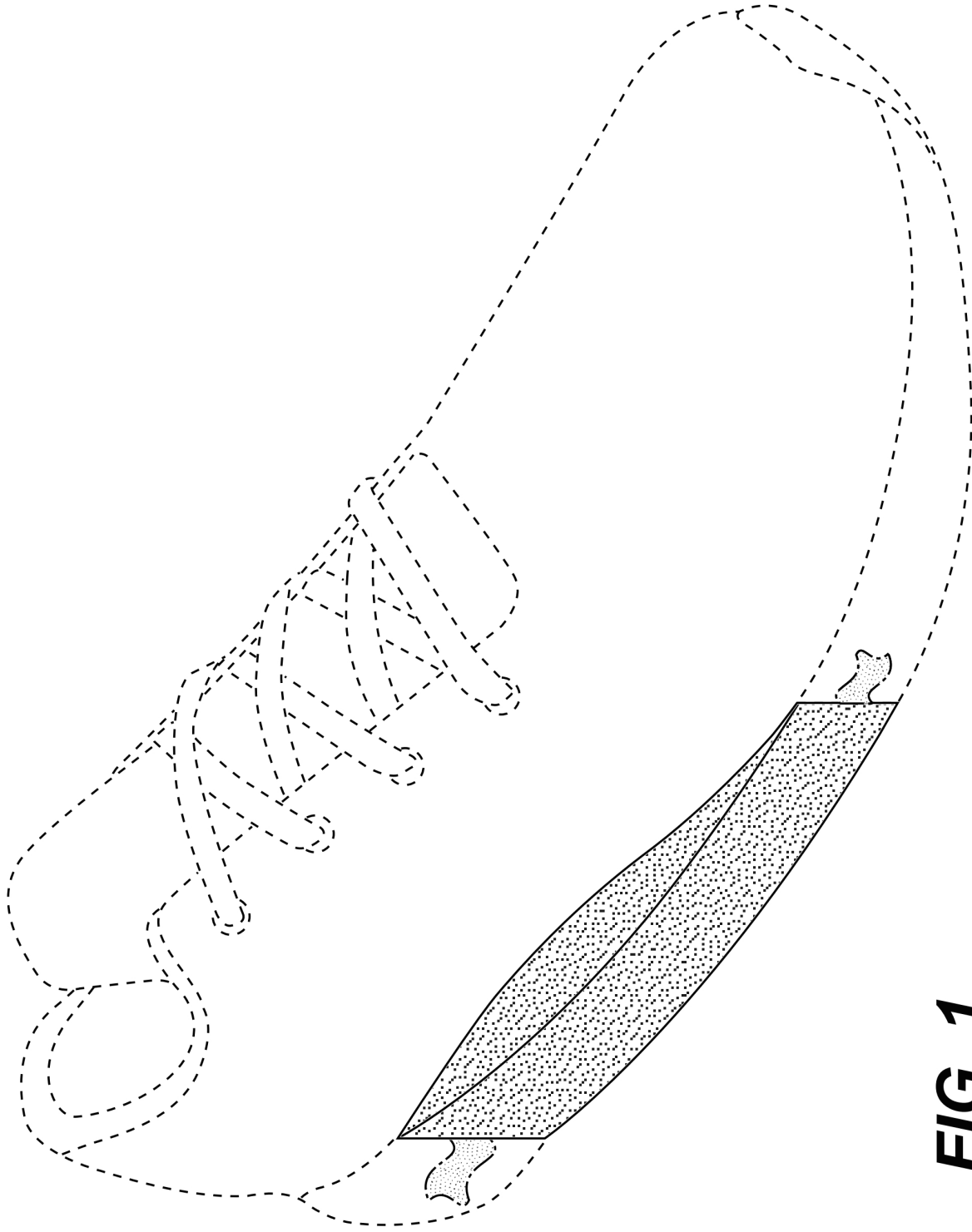


FIG. 1

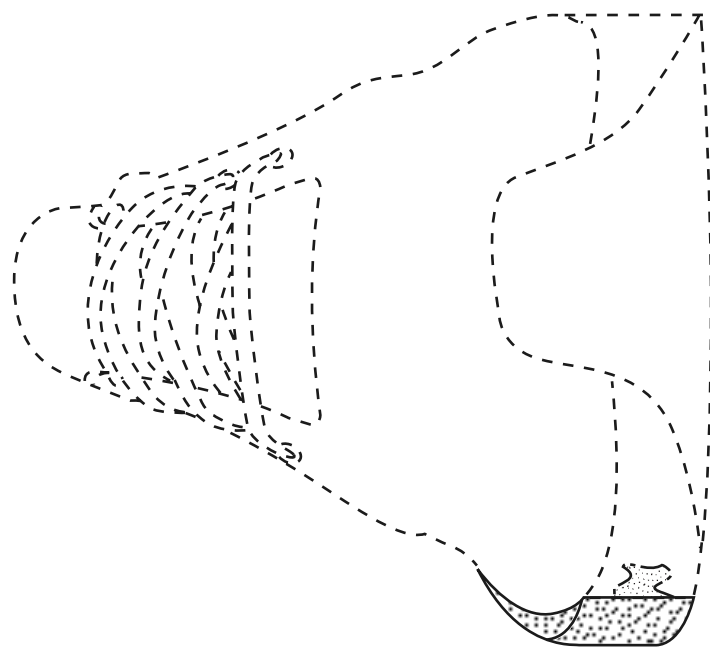


FIG. 2

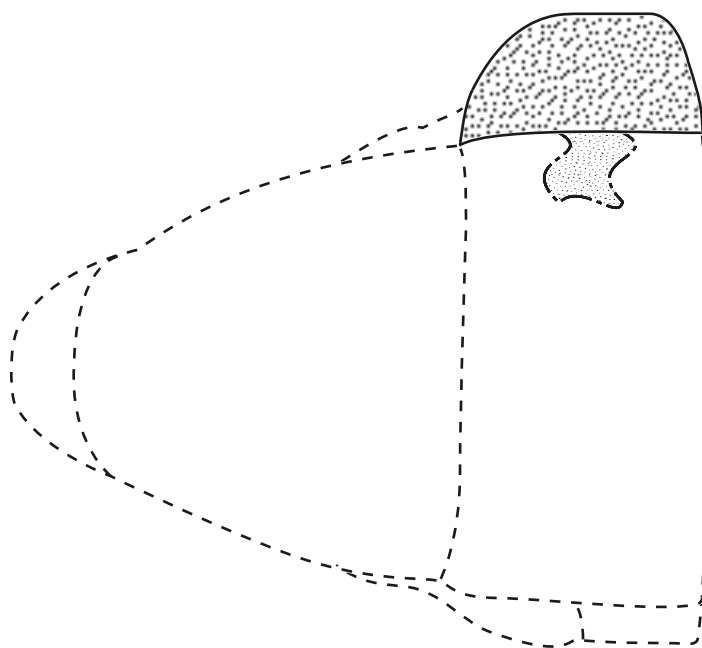


FIG. 3

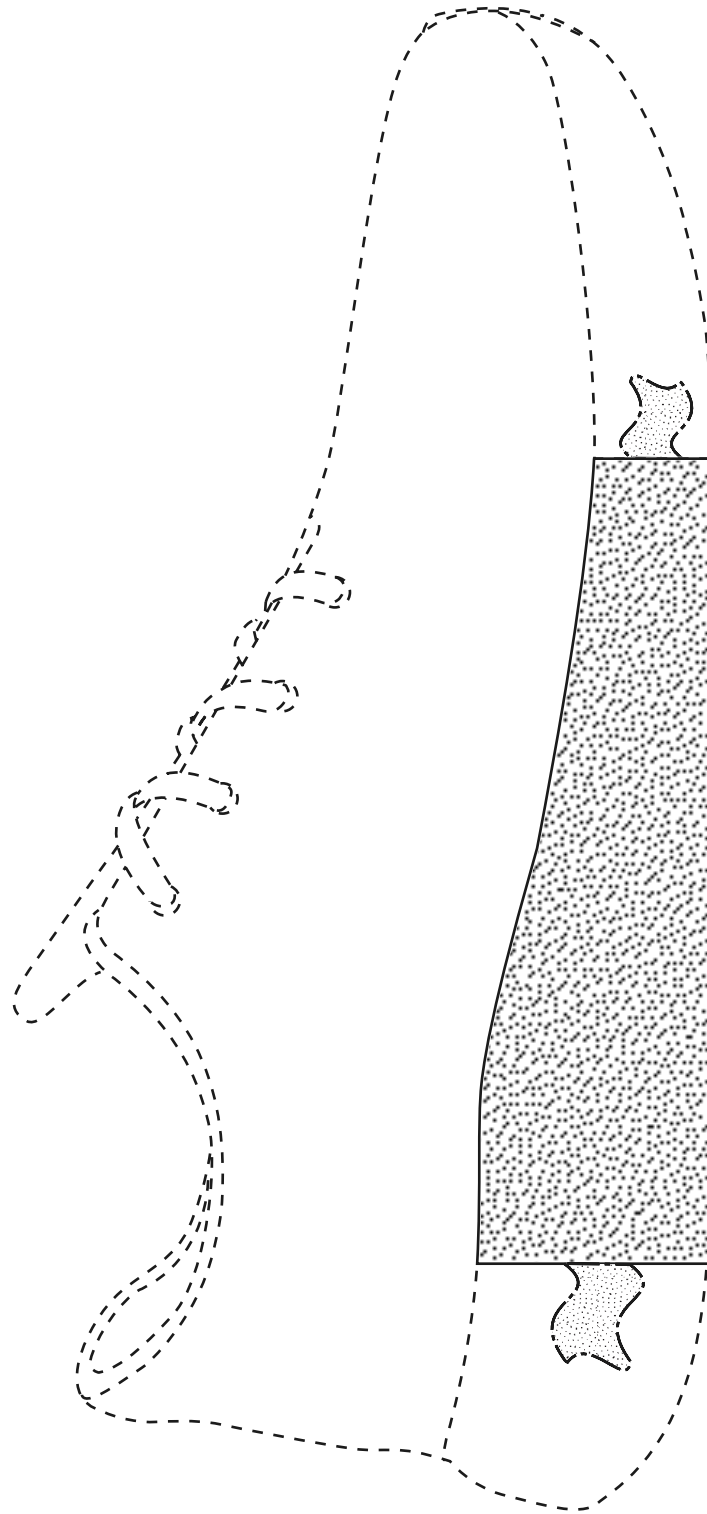


FIG. 4

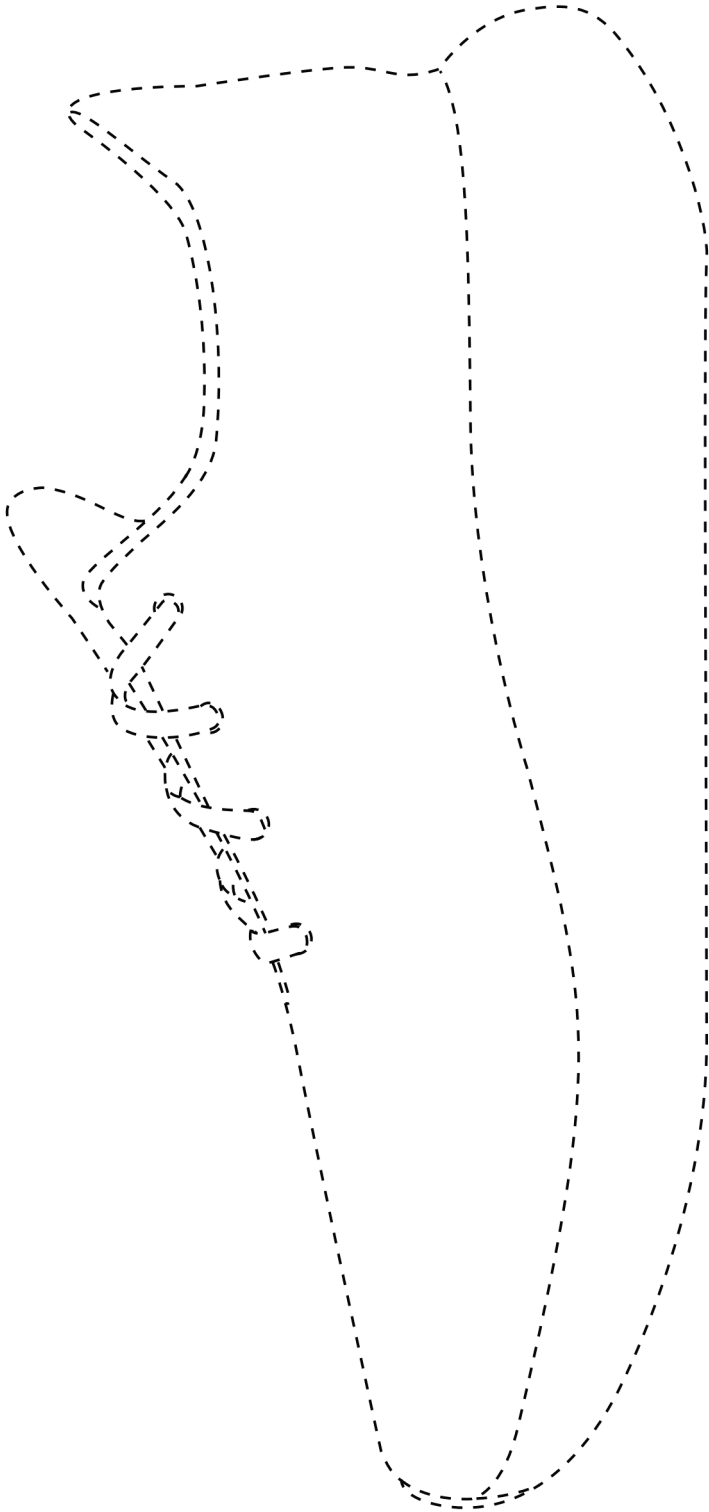


FIG. 5

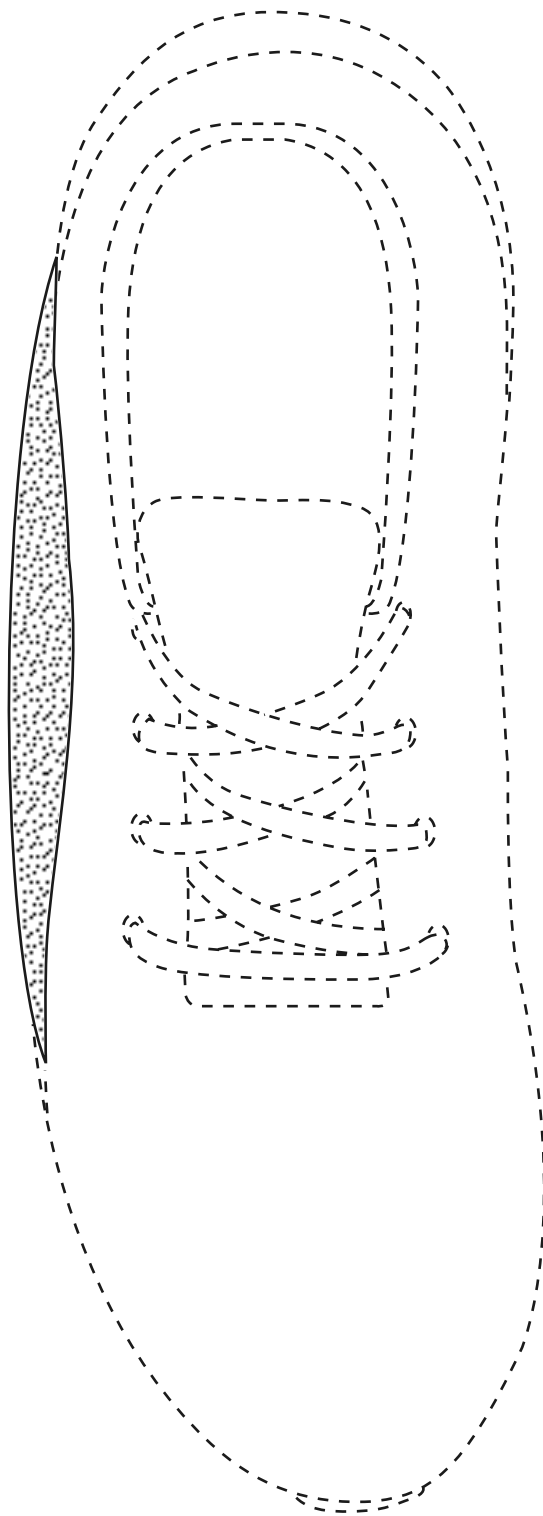


FIG. 6

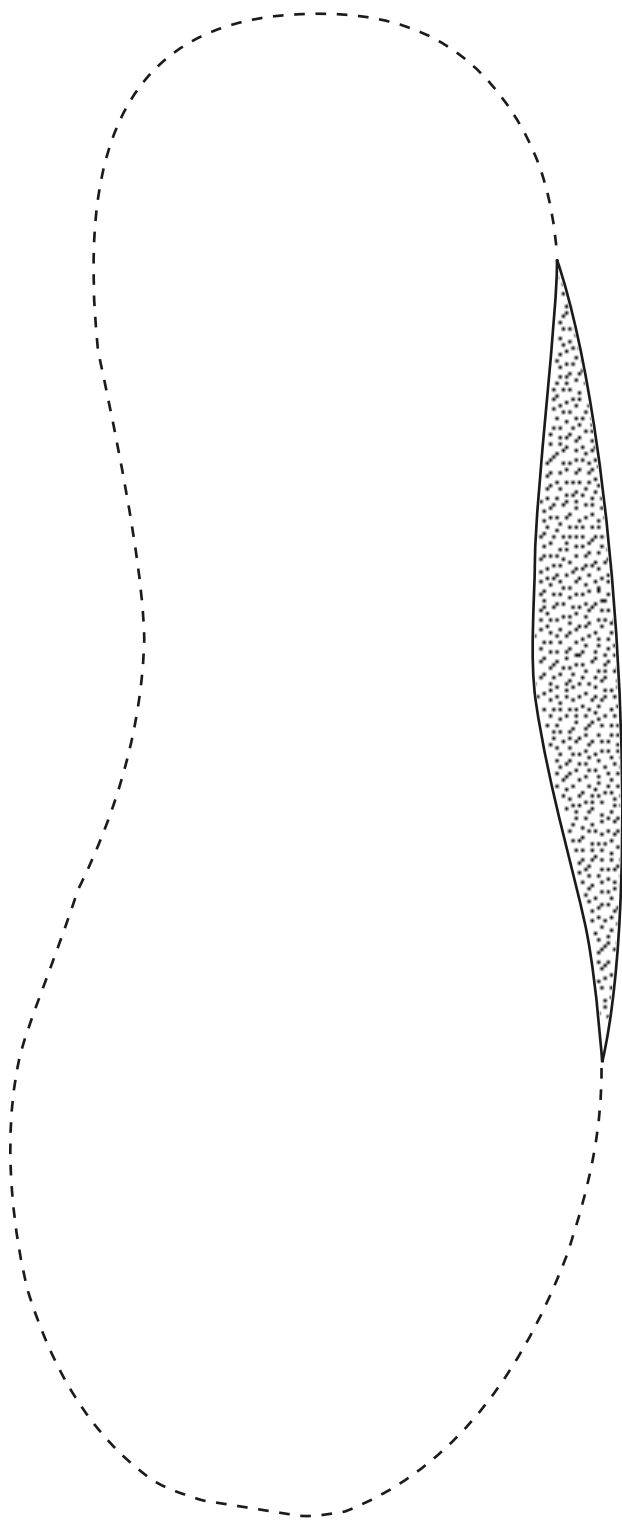


FIG. 7